

West Orange County by the Numbers

	West Orange	Orange County	West Orange as % of County	Florida	United States
Population:					
Population 2000	200,739	896,344	22%	15,982,378	281,421,906
Population 2010	264,506	1,118,349	24%	18,917,612	311,212,863
Population 2015	280,673	1,172,473	24%	19,720,776	323,209,391
Average Annual Percent Increase 2000-2010	3.2%	2.5%		1.8%	1.1%
Average Annual Percent Increase 2010-2015	1.2%	1.0%		0.8%	0.8%
Income 2010:					
Median Household Income	\$62,255	\$53,545	116%	\$49,910	\$54,442
Average Household Income	\$82,578	\$67,530	122%	\$64,516	\$70,173
Per Capital Income	\$28,758	\$25,257	114%	\$25,768	\$26,739
Median Household Disposable Income (after taxes)	\$50,754	\$43,255	117%	\$40,123	\$43,033
Average Household Disposable Income (after taxes)	\$68,021	\$56,382	121%	\$54,113	\$56,638
Businesses & Jobs 2010:					
Total Number of Businesses (including Gov and Educ.)	10,001	50,408	20%		
Total Number of Jobs (located within the area)	129,205	652,507	20%		
Occupations of People Living within the Area 2010:					
Total Employed Population 16+	120,582	513,577			
White Collar (mgt, professional, sales, administrative)	63.2%	62.2%			
Services	18.6%	20.6%			
Blue Collar (farm., const., install/repair, prod., transp.)	18.2%	17.2%			
Jobs Located within the Area (NAICS Codes):					
Total Jobs Located within Area	129,205	652,507			
Agriculture, Forestry, Fishing, Hunting, Mining	0.4%	0.1%			
Utilities	0.1%	0.2%			
Construction	6.1%	5.3%			
Manufacturing	3.4%	4.1%			
Wholesale Trade	4.6%	4.4%			
Retail Trade	9.7%	11.0%			
Transportation & Warehousing	1.4%	3.8%			
Information (includes software, telecom, publishing)	0.7%	2.7%			
Finance & Insurance	1.1%	3.2%			
Real Estate, Rental & Leasing	2.7%	3.3%			
Professional, Scientific & Tech Services	2.4%	7.5%			
Management of Companies & Enterprises	0.0%	0.2%			
Administrative & Support & Waste Mgt/Remediation	2.9%	4.6%			
Educational Services	6.7%	6.9%			
Health Care & Social Assistance	6.6%	11.6%			
Arts, Entertainment & Recreation	10.3%	3.7%			
Accommodation & Food Services	33.1%	17.2%			
Other Services	3.5%	4.7%			
Public Administration	3.4%	4.5%			
Unclassified Establishments	0.7%	0.9%			
Average Travel Time to Work 2000 (minutes)	28.0	26.6			
At least high school graduate 2010 (population 25+)	86.5%	86.9%			
Unemployment Rate 2010	10.8%	12.5%			

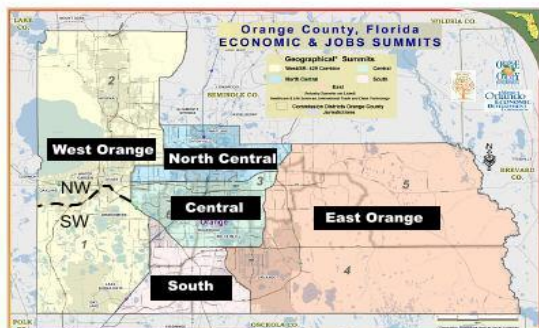
Note: People in the area may work outside the area. People may travel from outside the area to jobs in the area.

Northwest Orange County (map on other side)

Rock Springs Run State Reserve
 Wekiwa State Park
 Lake Apopka
 Apopka
 Zellwood, Tangerine, Plymouth
 Winter Garden, Oakland, Ocoee, Clarcona
 Part of Pine Hills
 Apopka Senior High School
 West Orange High School
 Killarney, Tildenville

Southwest Orange County (map on other side)

Orange County National Golf Course
 Lake Butler
 Gotha
 Walt Disney World
 Magic Kingdom
 Disney Animal Kingdom
 Disney Resorts
 Epcot Center
 Windermere, Isleworth
 Lake Buena Vista
 Doctor Phillips area
 Dr Phillips High School
 Bay Hill



West Orange County Area:

Northern Border: Lake County Line
 Southern Border: Osceola County Line
 Western Border: Lake County line.

Eastern Border Going North to South: Seminole County Line, down Pine Hills Rd, west on Silver Star Rd, south on Good Holmes Rd and Turnpike, south on Turkey Lake Rd to I-4 and Osceola County line.

Prepared by
**Orange County Office of
 Economic, Trade & Tourism**



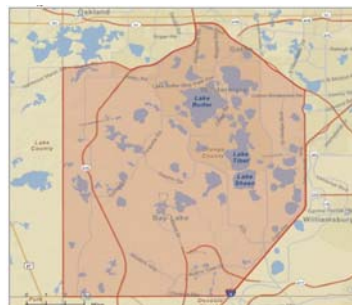
Northwest & Southwest Orange County by the Numbers

	Northwest Orange County		Southwest Orange County		Orange County
	Number	% of County	Number	% of County	
Population:					
Population 2000	151,579	16.9%	48,997	5.5%	896,344
Population 2010	184,761	16.5%	79,549	7.1%	1,118,349
Population 2015	192,132	16.4%	88,345	7.5%	1,172,473
Average Annual Percent Increase 2000-2010	2.2%		6.2%		2.5%
Average Annual Percent Increase 2010-2015	0.8%		2.2%		1.0%
Income 2010:					
Median Household Income	\$54,839	102%	\$87,491	163%	\$53,545
Average Household Income	\$66,082	98%	\$121,070	179%	\$67,530
Per Capital Income	\$23,009	91%	\$42,113	167%	\$25,257
Median Household Disposable Income (after taxes)	\$44,246	102%	\$70,446	163%	\$43,255
Average Household Disposable Income (after taxes)	\$55,456	98%	\$97,360	173%	\$56,382
Businesses & Jobs 2010:					
Total Number of Businesses (including Gov. and Educ.)	6,686	13.3%	3,314	6.6%	50,408
Total Number of Jobs (located within the area)	60,092	9.2%	68,992	10.6%	652,507
Occupations of People Living within the Area 2010:					
Total Employed Population 16+	82,802	16.1%	37,673	7.3%	513,577
White Collar (mgt, professional, sales, administrative)	57.8%		75.1%		62.2%
Services	19.7%		16.2%		20.6%
Blue Collar (farm., const., install/repair, prod., transp.)	22.5%		8.7%		17.2%
Jobs Located within the Area (NAICS Codes):					
Total Jobs Located within Area	60,092	9.2%	68,992	10.6%	652,507
Agriculture, Forestry, Fishing, Hunting, Mining	0.8%		0.1%		0.1%
Utilities	0.1%		0.1%		0.2%
Construction	10.1%		2.7%		5.3%
Manufacturing	7.3%		0.1%		4.1%
Wholesale Trade	9.0%		0.8%		4.4%
Retail Trade	16.3%		4.0%		11.0%
Transportation & Warehousing	2.6%		0.4%		3.8%
Information (includes software, telecom, publishing)	0.7%		0.8%		2.7%
Finance & Insurance	1.5%		0.8%		3.2%
Real Estate, Rental & Leasing	2.5%		3.0%		3.3%
Professional, Scientific & Tech Services	3.5%		1.4%		7.5%
Management of Companies & Enterprises	0.0%		0.0%		0.2%
Administrative & Support & Waste Mgt/Remediation	4.2%		1.8%		4.6%
Educational Services	10.6%		3.3%		6.9%
Health Care & Social Assistance	9.6%		4.1%		11.6%
Arts, Entertainment & Recreation	1.4%		18.1%		3.7%
Accommodation & Food Services	9.3%		53.6%		17.2%
Other Services	4.9%		2.2%		4.7%
Public Administration	5.5%		1.6%		4.5%
Unclassified Establishments	0.3%		1.1%		0.9%
Average Travel Time to Work Year 2000 (minutes)					
	29.0		24.8		26.6
At least high school graduate 2010 (population 25+)					
	82.9%		94.5%		86.9%
Unemployment Rate 2010					
	12.0%		9.5%		12.5%



Northwest Orange County

Southern Border going from east to west: Florida Turnpike, 429, Marsh Road.



Southwest Orange County

Northern Border going from east to west: Florida Turnpike, 429, Marsh Road.